

E092M

MIXMATIC

AUTOMATIC PROGRAMMABLE COMPUTERIZED MORTAR MIXER HIGH PERFORMANCE

STANDARDS: EN 196-1, EN 196-3, EN 413-2, EN 459-2, EN 480-1 | DIN 1164-5, DIN 1164-7 | ASTM C305, C359, C451 | AASHTO T162 | ISO 679

Mixmatic has an extremely sturdy fabricated frame for an intensive laboratory use. Complete with stainless steel polished beater, mixing bowl and automatic sand dispensers having dimensions and geometry to grant the correct sand insertion, without residual and disaggregation between fine and coarse portions. Dispenser for additives (see accessory mod. E092-05). Dispenser for automatic water addition (see accessory mod. E092-06).



E092M

Firmware:

- Different automatic programmable mixing cycles conforming to the a.m. Standards.
- The operator can also program up to 30 automatic personalized mixing cycles, easy to set through Touch Screen.
- Acoustic signals synchronised with cycle steps.
- Electronic control unit, that runs like a standard PC based on Windows operating system for the management and analysis of the data, test results, graphs. The touch-screen icon interface allows an easy set up of the parameters and immediate execution of the test. Unlimited memory storage through the USB port.
- Rotational motor feeded through inverter to grant the max. precision of the rotational speed, adjustable by the operator on the display.
- Possibility of manual mixing cycle.
- Possibility to select different languages.
- Display of elapsed time from the start of the mixing, speed of the beater, introduction of sand/water, status of the safety switch.
- Graphic display TFT 7", 800x480 pixel, Touch Screen.

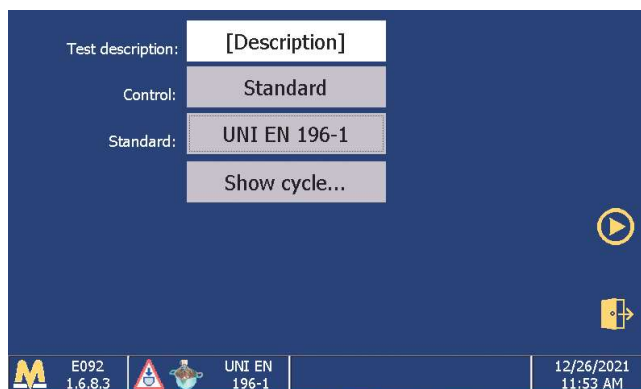
Power supply: 230V 50-60Hz 1ph

Dimensions: 580x570x830 mm

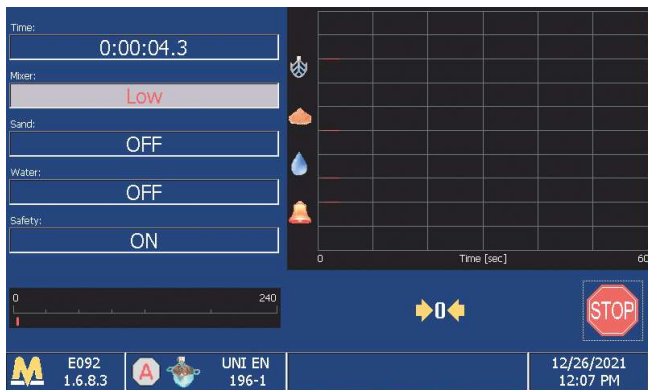
Weight: 85 kg approx.

MAIN FEATURES

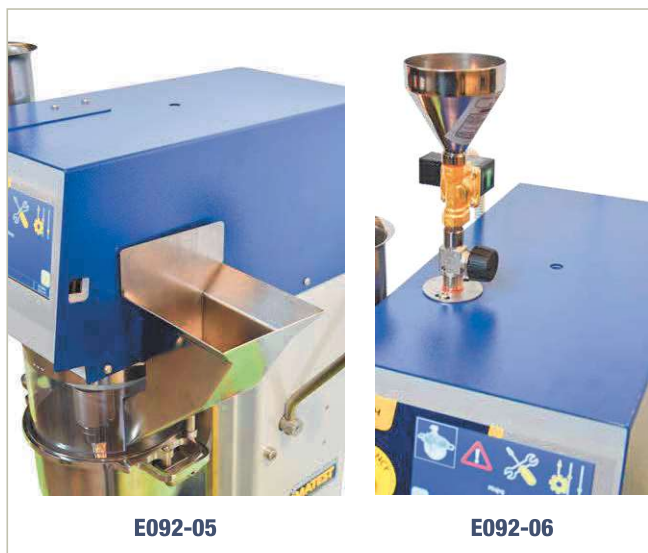
- Rugged design.
- Planetary transmission for silent and low maintenance operation.
- Transparent CE-conform protection of the mixing area, to allow the mixture looking during the test.
- Digitally controlled rotation speed.
- Easy and fast bowl insertion and removal.
- Safety system of bowl presence and correct position to avoid dangerous working, with double sensor of removed bowl with load/unload sequential discrimination.
- Emergency stop button.



Selection of the Standard

E092M MIXMATIC**Test execution**

Time [sec]	Mixer	Sand	Water	Safety
0	Low	OFF	OFF	ON
30	Low	ON	OFF	ON
60	High	OFF	OFF	ON
90	OFF	OFF	OFF	OFF
120	OFF	OFF	OFF	ON
180	High	OFF	OFF	ON
240	OFF	OFF	OFF	OFF

Personalized cycle composition**E092-05****E092-06****SPARES**

- E092-10** Stainless steel bowl.
- E095-04** Stainless steel beater, accurately polished.

ACCESSORIES

- E092-05** DISPENSER with hopper to ease the manual introduction of water or powders into the bowl, also during the mixing phase.
- E092-06** DISPENSER with hopper for the automatic introduction (managed by the software) of additives into the bowl, also during the mixing phase.

- E097-01N** REFERENCE SAND, size from 0.08 to 2 mm to EN 196-1 Standard. Bag of 1350 g. Pack of 16 bags for total of 21.6 kg



- E097-02** GRADED STANDARD SAND, type Ottawa, to ASTM C109, C778 Standards. Bag of 50 lbs approx.

- E097-02SP** GRADED SAND, comparable to E097-02. Bag of 25 kg approx.

**E097-02SP**

Use examples